

FOR SAILORS  
ONLY SINCE  
1974

solaris*POWER*

DAL 1974 PER CHI NAVIGA



OPEN RANGE

SOLARIS: SINCE 1974  
QUALITY, SEAWORTHINESS  
AND ELEGANCE



The boatyard's reputation, founded in Aquileia more than 50 years ago, is better known among German, Swiss and Austrian yachtsmen than it is in Italy. Right from the beginning, the company's philosophy has been the building seaworthy, solid and secure sailing boats to the highest quality standards, capable of challenging the prestigious Scandinavian and Dutch yacht builders. Fittingly, Solaris claims that our yachts are also: "Built for mariners". Its volume and revenues increased fivefold in just a few years and

today it is the European leader in the category of top-class sailing boats from 50' to 110'. There are not many boatyards left today, who can combine leading-edge technology with traditional craftsmanship of detail and finishing as Solaris Yachts does. Since 2008 Solaris also operates a production unit dedicated to motoryachts from 44' to 100', including five 90' luxury displacement motoryachts for an internationally renowned brand. This facility is now the builder of the new Solaris Power range, to the same exacting quality standards of Solaris sailboats.

TRADITIONAL CRAFTSMANSHIP

There are not many boatyards left today, that can combine leading-edge technology with traditional craftsmanship of details and finishing as Solaris Yachts does.



THE LOBSTER BOAT HERITAGE

Solaris was among the first in Europe to build a lobster boat, the 47-foot Express Cruiser, by Bruce King, designer of the famous American Hinckley line.





SEA PERFORMANCE HAS ALWAYS BEEN OUR FIRST PRIORITY THIS IS WHERE WE INVEST OUR BEST RESOURCES

SMOOTH SAILING THROUGH THE WAVES AND A DRY DECK IN CHOPPY SEAS

The sharp shape of the bow and the pronounced flare, softens the passage through the waves and keeps the deck dry also in choppy seas.

GREAT STABILITY WHILE CRUISING AND AT ANCHOR

The hull shape guarantees safety, great stability and comfort when cruising and at anchor, without the need for stabilizers.



LOW FUEL CONSUMPTION RESULTING IN EXCELLENT RANGE AND REDUCED CO<sub>2</sub> EMISSIONS

The advanced studies on the hydrodynamics of the hull and the correct balance of weights ensure low fuel consumption, resulting in excellent range and reduced CO<sub>2</sub> emissions.

EFFICIENT CRUISING BOTH IN DISPLACEMENT AND IN PLANING MODE

Unlike ordinary boats with planing hulls, Solaris Power are capable to cruise steadily and without roll even in displacement mode.



THE LATEST PROPULSION TECHNOLOGY

Solaris Power yachts feature cutting-edge propulsion working in synergy with the shape of the hull. This is the outcome of intense collaboration between Victory Design and Volvo Penta. Since 2005 Brunello Acampora has been studying shapes that are optimised for the

IPS, including 'azimuth pods' for planing hulls; having found they generate huge performance improvements. Moreover, the compactness of the propulsion apparatus yields a noticeable increase of living space: the interiors of these boats compare favourably with much bigger

yachts, and make the tender easy to stow, launch and haul.



EASY DOCKING THANKS TO THE JOYSTICK

Docking manoeuvres are simplified thanks to the joystick and the azimuth pods, even with a single person at the controls.



LOW NOISE LEVEL AND ZERO VIBRATIONS

The absence of the rotating masses of the shaft line and the engine exhausts in the propeller pods ensure absence of vibrations and low noise.

SPACIOUS AND WELL VENTILATED ENGINE ROOM

Offering easy access to the engine itself and to the other systems.





# INNOVATIONS FOR MORE ON-BOARD COMFORT

## WALKAROUND

The decks of all models include lateral walkways that afford easy and safe movement from bow to stern.



## VERY LARGE SUNBEDS

All Solaris Power have the bow sundeck. Open models also offer an aft sundeck.



## TENDER GARAGE

Under the aft opening sundeck there is a large garage that can be used for the tender and various water toys.



## HYDRAULIC GANGWAY

The hydraulic gangway turns into a comfortable swim ladder.



## FOLD-OUT BULWARKS

These can be opened for enhanced enjoyment of the cockpit, increasing its surface by 20%.



## LAYOUT IN MULTIPLE VERSIONS

The internal and external layouts are available in several versions to suit the tastes and needs of owners.







OPEN RANGE

40

OPEN

P. 11

40

OPEN

P. 23

44

OPEN

P. 29

44 ST

OPEN

P. 37

48

OPEN

P. 43

52

OPEN

P. 53

52 ST

OPEN

P. 67

60

OPEN

P. 73

60 ST

OPEN

P. 87



# 40

## SOLARIS POWER 40

SETS NEW STANDARDS  
FOR THE CATEGORY, BOASTING LAYOUT  
AND VOLUMES OF A 43 FOOTER.

O  
P  
E  
N

- 11 -



# 40





40



ALSO IN COMFORT OFFERS  
THE FEATURES OF A 43 -FOOTER

NO STEPS FOR  
TOP SAFETY AND COMFORT

Flush deck from the swimming platform to the steering position.



THE SOLE 40' WITH AN AFT SUNBED

Large storage space underneath.



WIDE T-TOP

Dining area, galley and steering position shaded by the extended T-Top.



SEPARATE SHOWER BOX

The sole 40' with a glass door separate shower box.



SOLARIS 40 OPEN  
BOASTS LAYOUT AND  
VOLUMES OF A 43-FOOTER

THE MOST EXTENDED  
LIVING AREA OF THE  
CLASS WITH A FIX KING  
SIZE SUNBED















MAIN DECK



LOWER DECK

Version A



LOWER DECK

Version B

40 OPEN

TECHNICAL SPECIFICATIONS

LENGTH OVERALL	11,97 m / 39'27"
WATER LINE LENGTH	10,62 m / 34'85"
BEAM	3,85 m / 12'63"
DRAFT	0,73 m / 2'4"
APPROX. LIGHT DISPLACEMENT	8231 kg / 18,146 lbs - Petrol engine 9040 kg / 19,929 lbs - Diesel engine
APPROX. LOAD DISPLACEMENT	9324 kg / 20,555 lbs - Petrol engine 10130 kg / 22,332 lbs - Diesel engine
FUEL CAPACITY	1.000 L / 265 US gal
WATER CAPACITY	250.L / 60 US gal
PETROL ENGINES	2 x Volvo Penta V6 280 209 kW / 280 hp 5800 rpm
DIESEL ENGINES (OPTIONAL)	2 x Volvo Penta D4 300 221 kW / 300 hp 3500 rpm 2 x Volvo Penta D6 380 280 kW / 435 hp 3500 rpm 2 x Volvo Penta D6 440 324 kW / 480 hp 3800 rpm
MAX SPEED	31 kn - V6 280 30 kn - D4 300 33 kn - D6 380 41 kn - D6 440
CRUISING SPEED	21 kn - V6 280 20 kn - D4 300 23 kn - D6 380 27 kn - D6 440
CABINS	1 (+1 optional)
BATHROOMS	1
MAX PERSONS CAPACITY	12
DESIGN	Brunello Acampora / Victory Design Solaris Power Design Team



# 40

## 40' OPEN OUTBOARD

SETS NEW STANDARDS FOR THE CATEGORY,  
BOASTING LAYOUT AND VOLUMES OF A  
43-FOOTER.

O  
P  
E  
N



# 40









MAIN DECK



LOWER DECK

Version A



LOWER DECK

Version B

40' OPEN

TECHNICAL SPECIFICATIONS

LENGTH OVERALL	11,97 m / 39'27"
WATER LINE LENGTH	11,80 m / 38'71"
BEAM	3,85 m / 12'63"
DRAFT	0,73 m / 2'4"
APPROX. LIGHT DISPLACEMENT	8.231 kg / 18,146 lbs
APPROX. LOAD DISPLACEMENT	9.324 kg / 20,555 lbs
FUEL CAPACITY	1.000 L / 265 US gal
WATER CAPACITY	200.L / 44 US gal
PETROL ENGINES	2 x Mercury Verado 350 257 kW / 350 hp 6.400 rpm
PETROL ENGINES (OPTIONAL)	2 x Mercury Verado 450R 335 kW / 450 hp 6.400 rpm
MAX SPEED	35 kn - Mercury Verado 350 41 kn - Mercury Verado 450
CRUISING SPEED	25 kn - Mercury Verado 350 30 kn - Mercury Verado 450
CABINS	1 (+1 opzionale)
BATHROOMS	1
MAX PERSONS CAPACITY	12
DESIGN	Brunello Acampora / Victory Design Solaris Power Design Team



# 44

## SOLARIS POWER 44

ALL THE SEAWORTHY FEATURES OF THE  
SOLARIS POWER RANGE WITH THE LARGEST  
LIVING AREA IN THE CATEGORY.  
NEVER BEFORE HAS A 44-FOOTER  
OFFERED SO MUCH.

O  
P  
E  
N



# 44













MAIN DECK

Optional Fold-out Bulwarks



LOWER DECK

Version A



LOWER DECK

Version B



LOWER DECK

Version C



44 OPEN

TECHNICAL SPECIFICATIONS

LENGTH OVERALL	13,47 m / 44'2"
WATER LINE LENGTH	11,95 m / 39'2"
BEAM	4,35 m / 14'3"
DRAFT	1,03 m / 3'4"
APPROX. LIGHT DISPLACEMENT	11.500 kg / 25,353 lbs
APPROX. LOAD DISPLACEMENT	14.000 kg / 30,864 lbs
FUEL CAPACITY	1.200 L / 317 US gal
WATER CAPACITY	330 L / 87 US gal
ENGINES	2 x Volvo Penta D6 IPS 500 272 kW / 370 hp 3500 rpm 2 x Volvo Penta D6 IPS 600 320 kW / 435 hp 3500 rpm 2 x Volvo Penta D6 IPS 650 353 kW / 480 hp 3800 rpm
MAX SPEED	33 kn - IPS 500 36,5 kn - IPS 600 39 kn - IPS 650
CRUISING SPEED	22 kn - IPS 500 25 kn - IPS 600 26,5 kn - IPS 650
CABINS	2
BATHROOMS	1
MAX PERSONS CAPACITY	12
DESIGN	Brunello Acampora / Victory Design Solaris Power Design Team



# 44<sup>ST</sup>

## NEW 44 OPEN ST

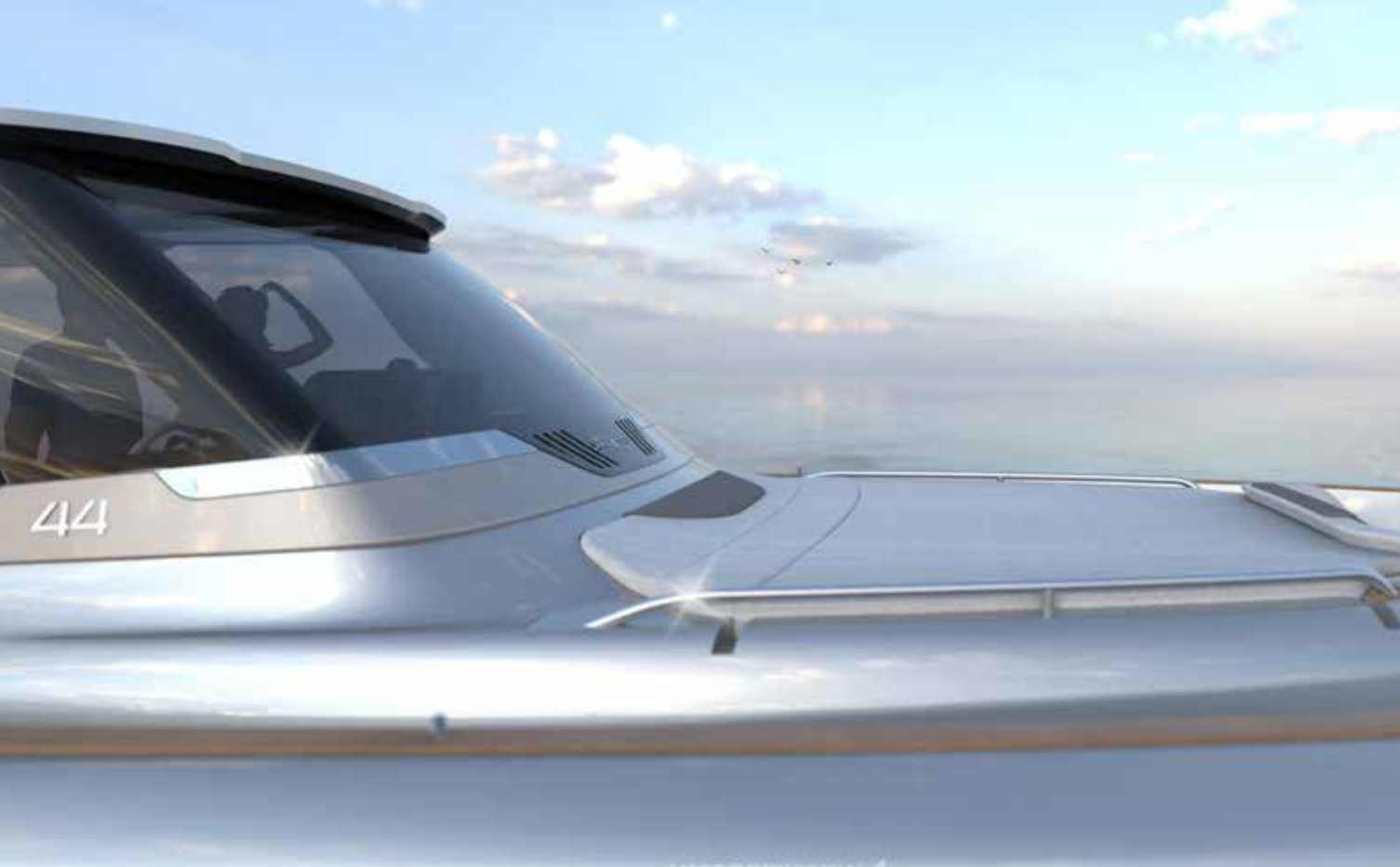
WITH EXTENDED T-TOP  
AND FULL-HEIGHT WINDSHIELD.  
THIS VERSION OFFERS  
GREATER SUN PROTECTION AND  
SIGNIFICANT SHELTER FROM THE WIND,  
WHILE PRESERVING THE TRADITIONAL  
SOLARIS POWER ELEGANCE.

O  
P  
E  
N

# 44<sup>ST</sup>







44<sup>ST</sup>





MAIN DECK

Optional Fold-out Bulwarks



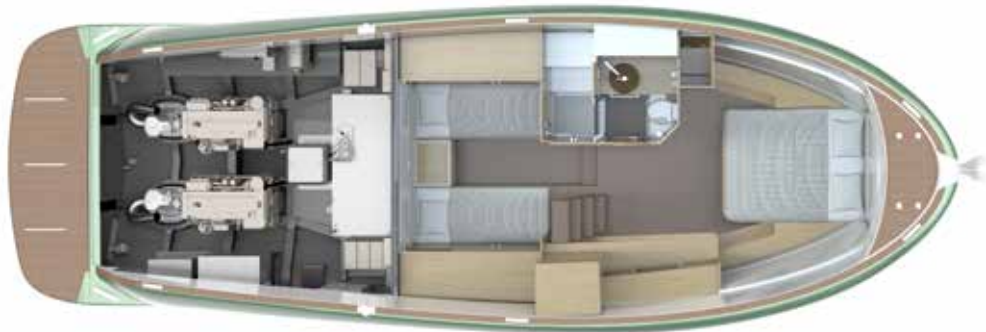
LOWER DECK

Version A



LOWER DECK

Version B



LOWER DECK

Version C



44 OPEN ST

TECHNICAL SPECIFICATIONS

LENGTH OVERALL	13,47 m / 44'2"
WATER LINE LENGTH	11,95 m / 39'2"
BEAM	4,35 m / 14'3"
DRAFT	1,03 m / 3'4"
APPROX. LIGHT DISPLACEMENT	11.500 kg / 25,353 lbs
APPROX. LOAD DISPLACEMENT	14.000 kg / 30,864 lbs
FUEL CAPACITY	1.200 L / 317 US gal
WATER CAPACITY	330 L / 87 US gal
ENGINES	2 x Volvo Penta D6 IPS 500 272 kW / 370 hp 3500 rpm 2 x Volvo Penta D6 IPS 600 320 kW / 435 hp 3500 rpm 2 x Volvo Penta D6 IPS 650 353 kW / 480 hp 3800 rpm
MAX SPEED	33 kn - IPS 500 36,5 kn - IPS 600 39 kn - IPS 650
CRUISING SPEED	22 kn - IPS 500 25 kn - IPS 600 26,5 kn - IPS 650
CABINS	2
BATHROOMS	1
MAX PERSONS CAPACITY	12
DESIGN	Brunello Acampora / Victory Design Solaris Power Design Team



# 48

## EUROPEAN POWER BOAT OF THE YEAR

FLARED BOW FOR SMOOTH SAILING  
THROUGH THE WAVES. GREAT STABILITY  
WHILE CRUISING AND AT ANCHOR.  
THE ONLY OPEN BOAT WITH A TRUE  
WALKAROUND DECK, FEATURING THE SAME  
CABIN SPACE OF A CONVENTIONAL CABIN  
CRUISER.

O  
P  
E  
N

# 48







48











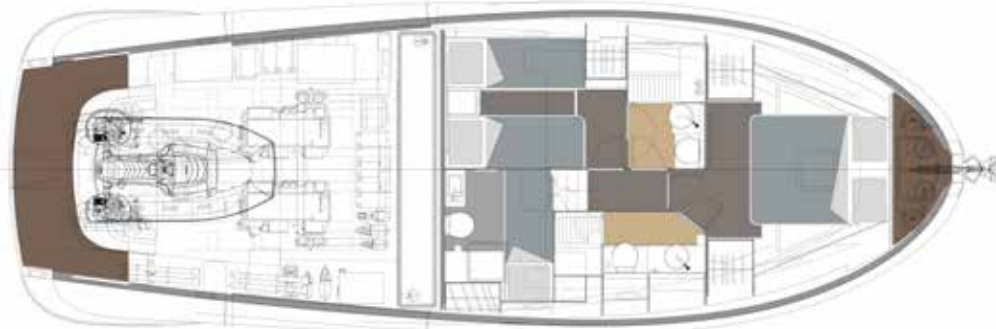


MAIN DECK



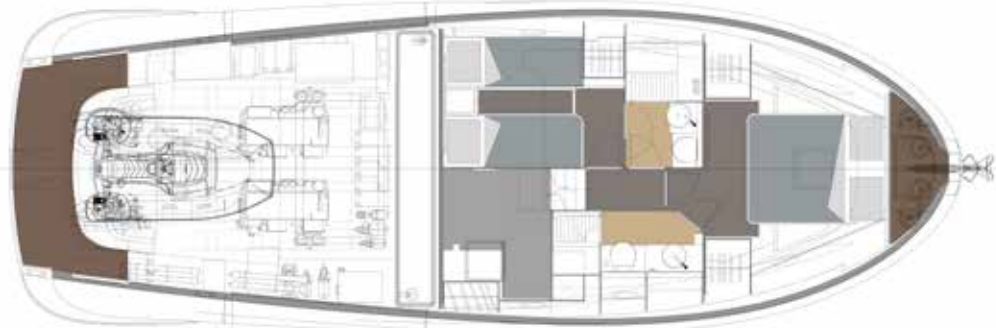
LOWER DECK

Version A



LOWER DECK

Version B



LOWER DECK

Version C



48 OPEN

TECHNICAL SPECIFICATIONS

LENGTH OVERALL	14,86 m / 48'74"
WATER LINE LENGTH	13,40 m / 43'95"
BEAM	4,87 m / 15'97"
DRAFT	1,05 m / 3'44"
APPROX. LIGHT DISPLACEMENT	14.000 kg / 30,864 lbs
APPROX. LOAD DISPLACEMENT	16.800 kg / 37,037 lbs
FUEL CAPACITY	1.500 L / 396 US gal
WATER CAPACITY	430 L / 114 US gal
ENGINES	2 x Volvo Penta D6 IPS 600 320 kW / 435 hp 3500 rpm 2 x Volvo Penta D6 IPS 650 353 kW / 480 hp 3800 rpm
MAX SPEED	34 kn    36 kn
CRUISING SPEED	23 kn    26 kn
CABINS	1/2
BATHROOMS	1 + 1
MAX PERSONS CAPACITY	12
DESIGN	Brunello Acampora / Victory Design Cav. Norberto Ferretti Solaris Power Design Team



# 52

## THE 52 OPEN

SOLARIS 52' BOASTS LAYOUT AND  
VOLUMES AT THE TOP OF THE CATEGORY  
CONFIRMS THE GREAT SEAGOING  
CAPABILITIES AND THE UNMISTAKABLE  
ELEGANCE.

O  
P  
E  
N

# 52

















THE NEW 52 OPEN OFFERS THE  
WIDEST DECK LAYOUT ON A BOAT  
OF THIS SIZE

MAIN DECK A



MAIN DECK B



MAIN DECK C





# INNOVATIONS FOR MORE ON-BOARD COMFORT

## WALKAROUND

The decks of all models include lateral walkways that afford easy and safe movement from bow to stern.

## TENDER GARAGE

Under the aft opening sundeck there is a large garage that can fit a waterjet tender and various water toys.

## HYDRAULIC GANGWAY

The hydraulic gangway turns into a comfortable swim ladder.

## LAYOUT IN MULTIPLE VERSIONS

The internal and external layouts are available in several versions to suit the tastes and needs of owners. A layout with three large cabins is also available.

## FOLD-OUT BULWARKS

These can be opened for enhanced enjoyment of the cockpit, increasing its surface by 20%.

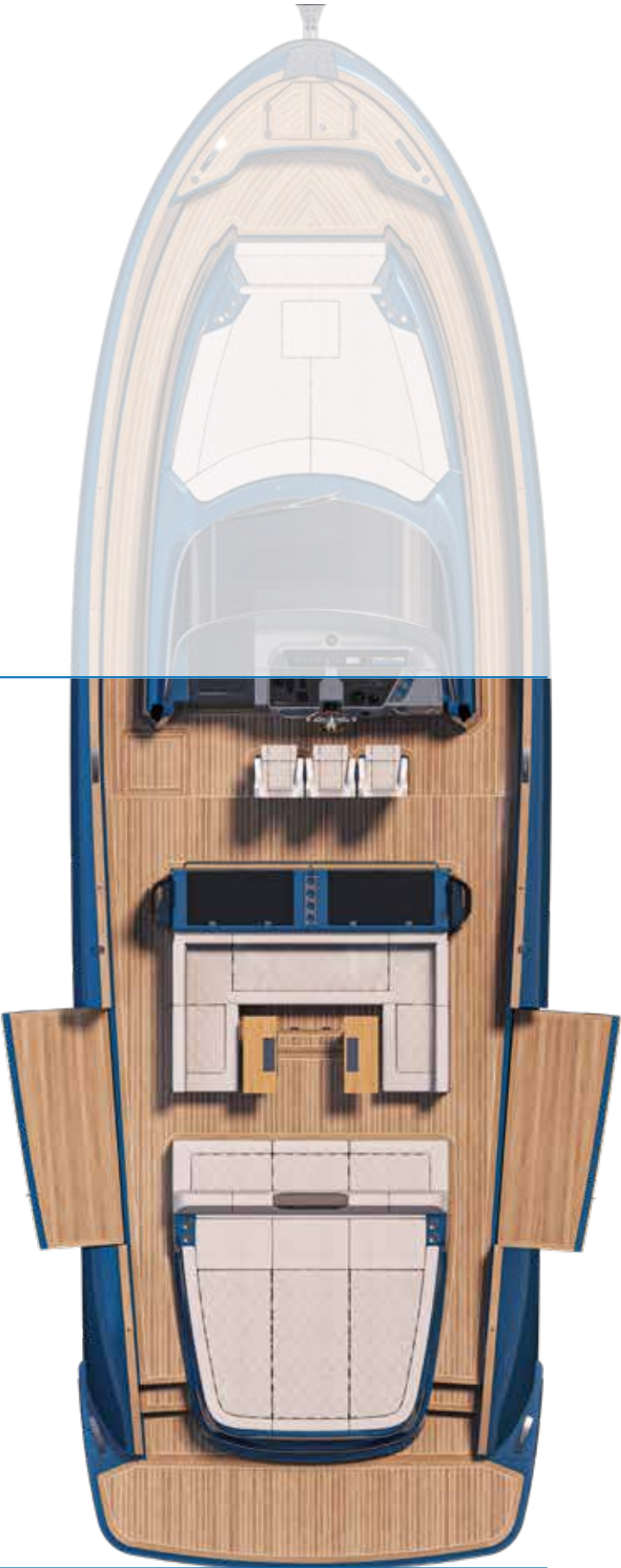
## TENDER LIFT STERN PLATFORM

It can be used during all nautical activities on board: lifting and launching a tender, a jet-ski or sea bobs, as well as a swimming deck.

## VERY LARGE SUNBEDS

All Solaris Power have the bow sundeck. Open models also offer an aft sundeck.

THE MOST  
EXTENDED LIVING  
AREA ON A 52’  
INCLUDING 2 REAL  
FULL-SIZE SOFAS







MAIN DECK



LOWER DECK

Version A (optional)



LOWER DECK

Version B (optional)



LOWER DECK

Version C (optional)



LOWER DECK

Version D (standard)



## 52 OPEN

### TECHNICAL SPECIFICATIONS

LENGTH OVERALL	16,2 m / 53'2"
WATER LINE LENGTH	14,83 m / 48'8"
BEAM	4,97 m / 16'4"
DRAFT	1,5 m / 4'11"
APPROX. LIGHT DISPLACEMENT	17.700 kg / 39,022 lbs
APPROX. LOAD DISPLACEMENT	21.500 kg / 47,400 lbs
FUEL CAPACITY	2.000 L / 528 US gal
WATER CAPACITY	570 L / 145 US gal
ENGINES	2 x Volvo Penta D6-IPS650 353 kW / 480hp 3800 rpm Optional 2 x Volvo Penta D8-IPS800 441 kW / 600 hp 3000 rpm
MAX SPEED	30 kn - IPS 650 35 kn - IPS 800
CRUISING SPEED	24 kn - IPS 650 27 kn - IPS 800
CABINS	2 + 1 (optional)
BATHROOMS	2
MAX PERSONS CAPACITY	15
DESIGN	Brunello Acampora / Victory Design Solaris Power Design Team



# 52<sup>ST</sup>

## NEW 52 OPEN ST

WITH FULL-HEIGHT WINDSHIELD.  
THIS VERSION OFFERS EXCELLENT  
WIND PROTECTION AND AMPLE SHADE  
FROM THE SUN, ALL ENHANCED BY THE  
UNMISTAKABLE ELEGANCE THAT DEFINES  
EVERY SOLARIS POWER.

O  
P  
E  
N

52<sup>ST</sup>





52<sup>ST</sup>







MAIN DECK



LOWER DECK

Version A (optional)



LOWER DECK

Version B (optional)



LOWER DECK

Version C (optional)



LOWER DECK

Version D (standard)



52 OPEN ST

TECHNICAL SPECIFICATIONS

LENGTH OVERALL	16,2 m / 53'2"
WATER LINE LENGTH	14,83 m / 48'8"
BEAM	4,97 m / 16'4"
DRAFT	1,5 m / 4'11"
APPROX. LIGHT DISPLACEMENT	17.700 kg / 39,022 lbs
APPROX. LOAD DISPLACEMENT	21.500 kg / 47,400 lbs
FUEL CAPACITY	2.000 L / 528 US gal
WATER CAPACITY	570 L / 145 US gal
ENGINES	2 x Volvo Penta D6-IPS650 353 kW / 480hp 3800 rpm Optional 2 x Volvo Penta D8-IPS800 441 kW / 600 hp 3000 rpm
MAX SPEED	30 kn - IPS 650 35 kn - IPS 800
CRUISING SPEED	24 kn - IPS 650 27 kn - IPS 800
CABINS	2 + 1 (optional)
BATHROOMS	2
MAX PERSONS CAPACITY	15
DESIGN	Brunello Acampora / Victory Design Solaris Power Design Team



# 60

## 60 OPEN

LONG, COMFORTABLE AND SAFE CRUISING  
IN ANY SEA CONDITION, EXCLUSIVE LUXURY  
AND ENJOYMENT AT ANCHOR

O  
P  
E  
N

# 60





## LONG, COMFORTABLE AND SAFE CRUISING IN ANY SEA CONDITION

---

The boat sails smoothly through the waves and the deck stays dry thanks to the deep V hull, optimal balance of weights, low centre of gravity and the 60' waterline length. The full walkaround guarantees easy and safe movement from bow to stern even under sail. All of this makes the new 60 Open a real "queen of the sea" with a top speed of 40 knots.

## EXCLUSIVE LUXURY AND ENJOYMENT AT ANCHOR

---

Thanks to the large tender garage for an hydro-jet and water toys, the lift platform for jet-skis, the hydraulic gangway that turns into a comfortable swim ladder and the relax areas on the foredeck and astern.

## ALL THE COMFORTS FOR AN ONBOARD ENVIABLE QUALITY OF LIFE

---

Sun deck and living space on the foredeck and astern, bar on the deck, shaded dining area and maxi TV screen outside.

## ROOMY INTERIORS FOR LUXURIOUS LIVING DURING EXTENDED STAYS ONBOARD

---

Full-beam master cabin, optional 3 or 4 cabins with adjoining bathrooms with showers. Independent crew accommodation.

# OPEN



# INNOVATIONS FOR MORE ON-BOARD COMFORT

## WALKAROUND

The decks of all models include lateral walkways that afford easy and safe movement from bow to stern.

## TENDER GARAGE

Under the aft opening sundeck there is a large garage that can fit a waterjet tender and various water toys.

## HYDRAULIC GANGWAY

The hydraulic gangway turns into a comfortable swim ladder.

## LAYOUT IN MULTIPLE VERSIONS

The internal and external layouts are available in several versions to suit the tastes and needs of owners. A layout with three large cabins is also available.

## FOLD-OUT BULWARKS

These can be opened for enhanced enjoyment of the cockpit, increasing its surface by 20%.

## TENDER LIFT STERN PLATFORM

It can be used during all nautical activities on board: lifting and launching a tender, a jet-ski or sea bobs, as well as a swimming deck.

## VERY LARGE SUNBEDS

All Solaris Power have the bow sundeck. Open models also offer an aft sundeck.



















MAIN DECK

Version A (standard)



MAIN DECK

Version B (optional)



LOWER DECK

Version A (optional)



LOWER DECK

Version B (optional)



LOWER DECK

Version C (standard)



60 OPEN

TECHNICAL SPECIFICATIONS

LENGTH OVERALL	18,30 m / 60'
WATER LINE LENGTH	16,45 m / 53'12"
BEAM	5,36 m / 17'7"
DRAFT	1,65 m / 5'5"
APPROX. LIGHT DISPLACEMENT	23.163 kg / 50,706 lbs
APPROX. LOAD DISPLACEMENT	32.101 kg / 58,422 lbs
FUEL CAPACITY	3.000 L / 792 US gal
WATER CAPACITY	660 L / 180 US gal
ENGINES	2 x Volvo Penta D11 IPS 950 533 kW / 725 hp 2500 rpm Optional 2 x Volvo Penta D13 IPS 1350 735 kW / 1000 hp 2400 rpm
MAX SPEED	31 kn - IPS 950 41 kn - IPS 1350
CRUISING SPEED	24 kn - IPS 950 30 kn - IPS 1350
CABINS	2 / 3
BATHROOMS	2
MAX PERSONS CAPACITY	15
DESIGN	Brunello Acampora / Victory Design Solaris Power Design Team



# 60<sup>ST</sup>

## NEW 60 OPEN ST

WITH FULL-HEIGHT WINDSHIELD  
THIS VERSION OFFERS EXCELLENT  
WIND PROTECTION AND AMPLE SHADE  
FROM THE SUN, ALL ENHANCED BY THE  
UNMISTAKABLE ELEGANCE THAT DEFINES  
EVERY SOLARIS POWER.

O  
P  
E  
N

60<sup>ST</sup>







MAIN DECK



LOWER DECK

Version A (optional)



LOWER DECK

Version B (optional)



LOWER DECK

Version C (optional)



LOWER DECK

Version D (standard)



52 OPEN ST

TECHNICAL SPECIFICATIONS

LENGTH OVERALL	16,2 m / 53'2"
WATER LINE LENGTH	14,83 m / 48'8"
BEAM	4,97 m / 16'4"
DRAFT	1,5 m / 4'11"
APPROX. LIGHT DISPLACEMENT	17.700 kg / 39,022 lbs
APPROX. LOAD DISPLACEMENT	21.500 kg / 47,400 lbs
FUEL CAPACITY	2.000 L / 528 US gal
WATER CAPACITY	570 L / 145 US gal
ENGINES	2 x Volvo Penta D6-IPS650 353 kW / 480hp 3800 rpm Optional 2 x Volvo Penta D8-IPS800 441 kW / 600 hp 3000 rpm
MAX SPEED	30 kn - IPS 650 35 kn - IPS 800
CRUISING SPEED	24 kn - IPS 650 27 kn - IPS 800
CABINS	2 + 1 (optional)
BATHROOMS	2
MAX PERSONS CAPACITY	15
DESIGN	Brunello Acampora / Victory Design Solaris Power Design Team



SOLARISPOWER HEADQUARTER

Via Antonio Masetti, 30 - Forlì (FC) - Italy  
T. +39 0543 807062 - info@solarispower.com  
www.solarispower.com

AGENTS AND DISTRIBUTORS

PLEASE VISIT: [WWW.SOLARISPOWER.COM/CONTACTS](http://WWW.SOLARISPOWER.COM/CONTACTS)

DISCLAIMER AND COPYRIGHTS

Solaris Power Yachts reserves the right to change descriptions, modify, or substitute products in this catalogue without notice. Solaris is a registered trademark of Solaris

Yachts Srl, other names may be registered trademarks of their respective owners.  
Solaris Power © 2025. All rights reserved.

Rendering and illustrations: Victory Design  
Photo: C. Borlenghi, A. Muscatello,  
M. Paradisi, J. Kelagopian, A. Guerrieri  
Graphic design: DL&A Agency



